



Apollo arccClinical™

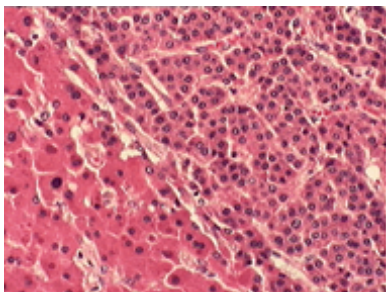
In the evolving world of digital pathology, many healthcare organizations are seeking a digital solution to meet their existing need for productivity and efficiency while also providing a pathway capable of supporting emerging digital technologies. Apollo's **arcc**® solution is designed to meet the most challenging requirements for managing a wide spectrum of digital pathology data and information in today's laboratory environment.

With a keen eye toward developing solutions that increase laboratory productivity, **arcc** offers pathologists and other laboratory professionals, a high degree of flexibility in how images and related case information are managed and viewed. Not only does **arcc** increase user productivity through effective management of clinical multimedia data, it also provides a user-defined environment where patient data residing in other systems may also be easily accessed and managed. In addition, **arcc** provides a high level of security using rules-based access and comprehensive audit trails ensuring privacy.



Is your Pathology Department seeking a solution that is easily adoptable to maximize your departmental workflow and create a greater overall value for your institution? If so, **arcc** can bring to your department many exciting and innovative capabilities. With Apollo's **arcc** you gain the ability to leverage or extend the life of your legacy investment and the ability to optimize access to patient data and images. **arcc** can be the pathway for experiencing many of the valuable benefits digital pathology can provide you, your colleagues, and above all else your patients.

arcc offers the following benefits...



- **Easy access to patient data and images** - finding what you're looking for has never been easier
- **Enhanced annotation and imaging tools** - robust tools available to better communicate critical information
- **Scalable to meet your organizational needs** - implement what you need today while knowing you can expand to meet future requirements
- **Secure and private data storage** - 4-layer security stack with patient class and image security levels to ensure both data and image security
- **Data and image acquisition from multiple sources** - ability to manage standards-based information (HL7, DICOM, etc.) and multimedia data and information (JPG, TIF, TWAIN, etc.)
- **Comprehensive whole slide image management** - vendor-agnostic whole slide scanner integration and digital pathology workflow



Apollo arccClinical™

Additional product features include...

The benefits offered by Apollo **arcc** are complemented by a wide array of system features which can be easily adapted by the user to provide useful and noticeable productivity improvements. Included in these system features are:

- **Automated document scanning** - no more lost or misplaced documents; save scanned documents directly in **arcc**
- **Stream-lined presentation preparation** - marked images are easily identified and retrieved for presentations and/or Tumor Boards
- **Searchable patient demographics** - search the database using various patient demographical criteria or search parameters
- **Remote access viewing** - via web-enabled services, communicate with colleagues in your department, institution, or remote service locations with proper privileges
- **Integration** - multiple types of standard and proprietary digital images into one archive, access to selectively published images through the hospital's EMR applications
- **Improved workflow efficiencies** - refined image capturing from grossing workstations and/or camera devices, upgraded patient record workflow to access images, documents, and notes associated with a patient
- **Color-coded images** - for tracking and control of patient images
- **Support** - live networked telepathology consultation
- **Digital image management** - workflow associated with interfaces to lab information system, EMR, and multiple laboratory-based devices that provide digital image and media output
- **Additional Security** - safeguards to prevent unauthorized access to database; accidental release of patient demographics and images

